



## Case Study - Petroleum Production Scale in the Recycled Water Line

Updated on: June 30, 2014

**Customer:** Natural gas and oil producer in Nikiski, Alaska, USA.

**Installer:** HydroFLOW West Inc.  
1955 Jadwin Ave. Suite 360  
Richland, WA. 99354  
509-940-5555  
Dr. Rodolfo Nicacio email at: [rudy@hydroflowwest.com](mailto:rudy@hydroflowwest.com)  
Mike Colton: [mike@hydroflowwest.com](mailto:mike@hydroflowwest.com)

**Water conditioning device:** HydroFLOW 120i.

**Application:** Offshore petroleum production operation. The device was installed on a 4.5" outer diameter recycled water pipe, after the separator.



**Goal of product evaluation:** Reduce scale accumulation inside the pipe and possibly soften existing scale deposits. The scale is predominantly made up of iron. In addition, lab analysis of the scale detected small quantities of magnesium, calcium carbonate and silicon.

**Installation date:** October 17, 2013.

**First inspection:** October 23, 2013 (*HydroFLOW* on for one week).

**Second inspection:** November 18, 2013 (*HydroFLOW* on for one month).

**Third inspection:** December 30, 2013 (*HydroFLOW* on for two months).

**Final inspection (if necessary):** Scheduled for June 2014 (*HydroFLOW* on for seven months).



October 17, 2013 - Installed *HydroFLOW 120i*



December 30, 2013 - Installed *HydroFLOW 120i* with winter protection (0° F / -18° C)



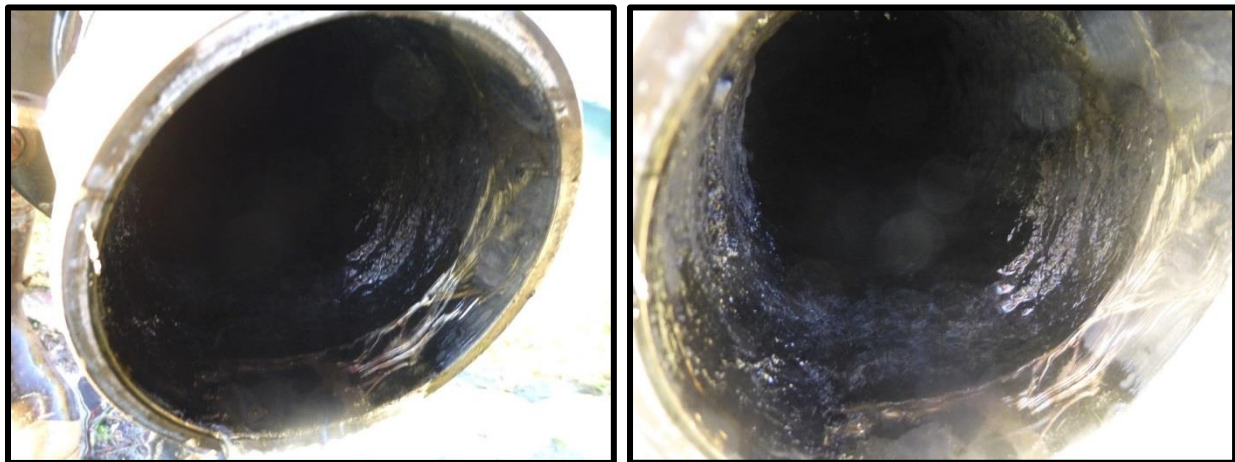


**Installation - October 17, 2013**



Baseline - Hard scale of roughly 1/2" along the inside of the pipe. The scale is dark because it is a mix of iron (predominantly), magnesium, calcium carbonate, silicon and other minerals.

**First inspection - October 23, 2013**



One week after the *HydroFLOW* 120i was installed - The scale was much softer and easily removed with a knife. A ring was cleaned in order to determine if scale will not accumulate on a clean surface as long as the 120i is in operation.

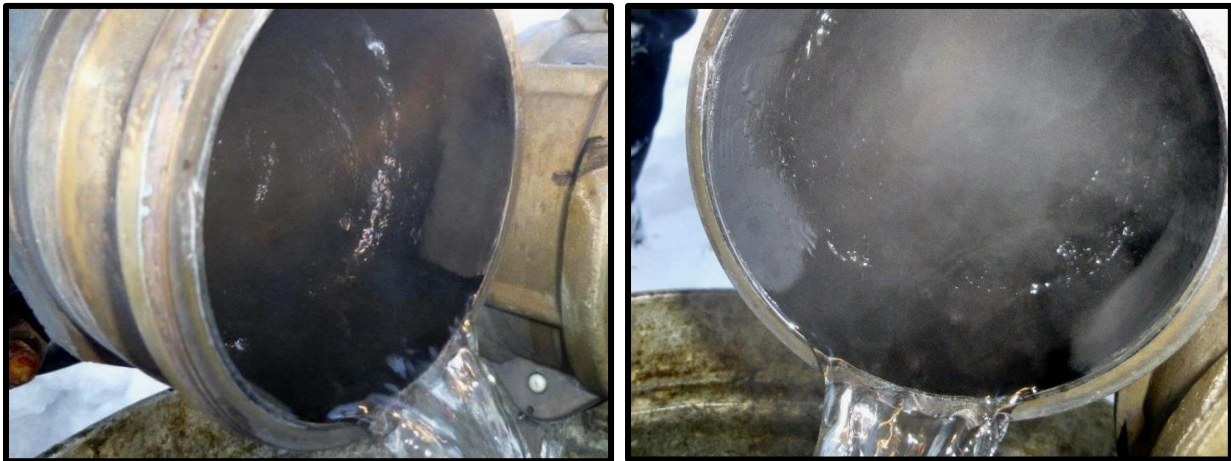


**Second inspection - November 18, 2013**



One month after the *HydroFLOW* 120i was installed - Apart for what seems like a thin magnetite layer, hard scale is not accumulating on the area that was cleaned after the first inspection. Existing scale can be flaked off with a finger and is roughly 1/8" to 1/4" thick. The customer's personnel were very surprised because typically removal of scale involves hard manual labor.

**Third inspection - December 30, 2013**



Two months after the *HydroFLOW* 120i was installed - Hard scale is not accumulating on the area that was cleaned after the first inspection. Existing scale can be easily flaked off.

### Third inspection - Additional observation



A "T" section was removed from the main line in order to inspect the inside of the pipe. It was noticed that the rate of scale removal from the bottom was much faster than the top and sides. The reason for this is because the bottom of the pipe has constant flow of water which allows scale to be removed more efficiently.

### Final inspection

A Final inspection was supposed to be conducted 7 months following the installation of the *HydroFLOW* 120i water conditioner. Conducting a final inspection was not required because there was no drop in water flow due to *HydroFLOW*'s ability to keep the pipe free of scale accumulation.